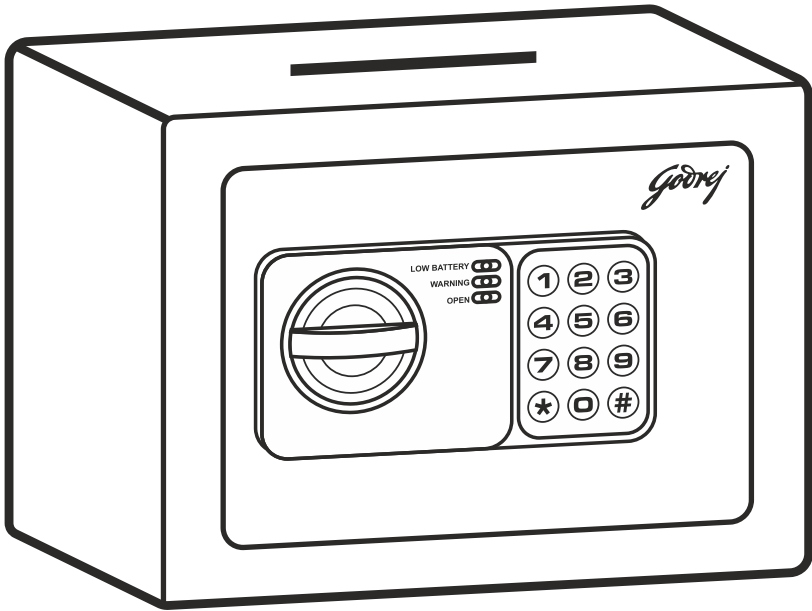


Godrej



DREAM BOX DIGITAL

USERMANUAL

DREAM BOX DIGITAL LOCKER



Dream Box Digital

Dream Box Digital is a compact, secure and affordable option to safeguard your precious possessions.

Ideal for



Daily use
valuables



Unlock with
4 to 8 Digit
Password



Innovative Robust
Solenoid Lock



Emergency
Access Key



Convenient Cash
Deposit Cutout



Low Battery
Indicator

Dimensions in cm (HxWxD)	17 x 23 x 17
Net weight (Kg.)	2.5
Volume (Ltr)	4.5

1. IMPORTANT INSTRUCTIONS

Please keep this manual and override keys in a safe place (**NOT INSIDE THE LOCKER**)

Make sure that the locker is anchored properly as there is a possibility that it can fall and hurt people or property.



DO NOT use any liquid while cleaning the keypad, you could use a damp cloth if required.



DO NOT place any liquid on top of the locker, a spill on the keypad may damage the locker inoperable.



DO NOT overstuff the locker or you may damage the motor mechanism or the contents.



DO NOT place the safe in direct sunlight in case of Biometric. For security purposes, you should change the factory default code i.e. Personal Code AND Master Code as soon as possible.



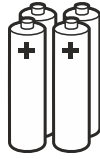
DO NOT open the back cover or try to repair the locker yourself. In case of any problem contact GSS call center at **1800 20 999 55** or write to us at secure@godrej.com

Note: For security purposes, you should change the factory default code i.e. Personal Code and Master Code as soon as possible. Godrej Security Solutions shall not be responsible for only theft caused by such negligence.

2. PACKAGE CONTENTS



Locker (1)



1.5V AA
Alkaline Battery (4)



Protection Carpet/
Pad (1)



·Mechanical
Override Key (2)

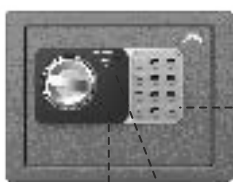


Anchor Bolt (2)



User Manual (1)

3. KNOW YOUR PRODUCT



Keypad

Status Indicator

Top Cover to Access
Mechanical Key



Reset Switch

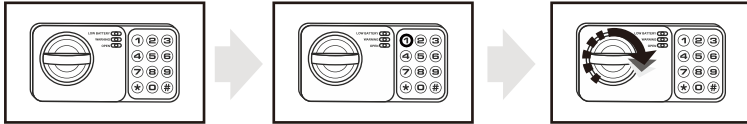
Battery Box

Note: To Access Reset switch open the safe door and remove battery box top cover.

4. OPERATING THE SAFE

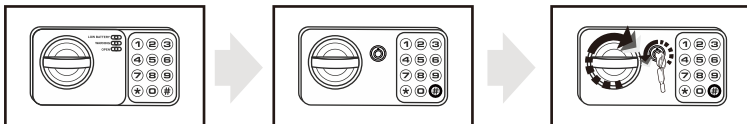
Opening the safe with Personal Code

1. To open the safe: Enter personal code and press **(#)** to confirm. Then the indicator panel shows green light, Now rotate the knob clockwise to open the door. (Solenoid is unlocked for 5 seconds and after 5 seconds solenoid gets locked and green light disappears from indicator panel)
2. To lock the safe: Close the door and rotate the knob anti-clockwise.



Opening the safe with Master Code

1. To open the safe: Enter master code and press **(#)** to confirm. When the indicator panel shows green light, Now rotate the knob clockwise to open the door. (Solenoid is unlocked for 5 seconds and after 5 seconds solenoid gets locked and green light disappears from indicator panel)
2. To lock the safe: Close the door and rotate the knob anti-clockwise.



WARNING:

If wrong code is entered 3 times continuously, the safe will be locked and alarm will sound for 20 seconds, after 20 seconds you can enter personal/ master code. If again wrong code is entered 3 times continuously, the safe will be locked and the alarm will sound for 5 minutes. During lockout, the safe goes in auto freeze mode.

5. TO CHANGE THE USER CODE

1. Open the safe.
2. Press Reset button once, Indicator panel will show Yellow Light and with 2 beeps .
3. Enter 4 to 8 digit new User Code and press **(#)** to confirm, Then indicator panel shows Yellow Light with 2 beeps. Yellow Light will disappear from indicator panel, it means New User Code is accepted.
4. Now you can use the New User Code to open the safe.

Note:

Default Personal Code is **“1234”**

6. TO CHANGE THE MASTER CODE

1. Open the safe.
2. Press **(0)** twice and then press Reset button once, Indicator Panel will show Yellow Light with 3 beeps.
3. Enter six digit new code and press **(#)** to confirm, Indicator Panel shows Yellow Light with two beeps. Yellow Light will disappear from Indicator Panel, it means New Master Code is accepted.
4. Now you can use the New Master Code to open the safe.

Note:

Default Master Code is **“800000”**

WARNING:

For security purposes, you should change the factory default code as soon as possible. Godrej Security Solution shall not be responsible for only theft caused by such negligence.

7. PROCESS TO RESET THE SAFE

- Press and hold the RESET button for 4 ~ 6 seconds.
- Continue holding until you hear a long beep sound.
- The long beep indicates that the safe has been set back to its factory set condition.

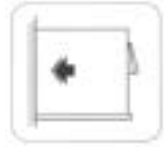
8. MOUNTING

Mounting Through The Bottom Of The Safe:

- Check the floor for what type it is (wood, tile, concrete)
- Get the appropriate anchors for the type of floor
- Check location on floor for concealed wires or pipes
- Mark the floor to drill for your anchor
- Drill the appropriate size hole for the anchors you have
- Mount the safe, making sure it is secure
- For mounting to the top of a cabinet you may want to use carriage bolts through the top of the cabinet
- **DO NOT** mount to a shelf in a cabinet or closet without anchoring to wall behind the safe

Mounting Through The Back Of The Safe:

- Check the wall or cabinet for structural Soundness
- For safety, have someone help to hold the safe during mounting
- Check location for concealed wires or pipes
- Mark the surface to drill holes for the anchors you will be using
- Drill the appropriate size holes for the anchors you are using
- Having someone hold the unit, anchor the safe to the wall
- Test the strength of the mounted safe so it will not fall off the wall or cabinet
- **DO NOT** place safe on a shelf without proper mounting into a wall



Mounting Tips:

- The safe may be mounted to a wall or the inside of a cabinet or on the floor
- When mounting to a wall or cabinet, be sure of the load bearing capacity so as to hold the weight of the safe and the contents
(Failure to do so could result in the safe falling and damaging property and people)

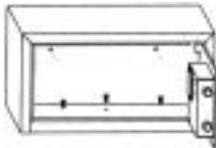


Fig I: Fix through baseboard

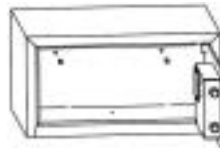


Fig II: Fix through backboard

9. REPLACING THE BATTERIES

1. Open the Safe using your personal code. If the batteries are dead, use the Emergency Override key.
2. Remove the battery cover on the back panel by unscrewing the Phillips screw.
3. Remove all four used batteries.
4. Replace the batteries with four 1.5V AA size alkaline batteries.
5. Put back the battery cover.
6. Dispose the used batteries in an environment friendly way.
7. Put back the Phillips screw to secure the battery cover.
8. Keeping the door open, test the safe to make sure it works.

10. EMERGENCY OVERRIDE KEY

When you first get the safe or in emergency like batteries running out, codes unknowns etc. you can open the safe using the following method:

1. Pull the gray cover around the knob from one of the corner to access mechanical override cylinder.
2. Using one of the emergency override keys, insert into the cylinder and turn anti-clockwise and turn the knob clockwise to open the door.
3. While the door is open, follow the instructions to set your personal code.

WARNING:

Keep the override keys in a safe place other than inside this safe. These keys are to be used in emergencies.

11. INFORMATION ON E-WASTE HANDLING AND MANAGEMENT

Dear Customer,

The Ministry of Environment and Forest and Climate Change have published The E-waste (Management) Rules 2022, which came into effect from 1st day of April 2023.

- E-waste means electrical and electronic equipment, including solar photo-voltaic modules or panels or cells, whole or in part discarded as waste, as well as rejects from manufacturing, refurbishment and repair process.
- These rules shall apply to every manufacturer, producer, refurbisher, dismantler and recycler involved in manufacture, sale, transfer, purchase, refurbishing, dismantling, recycling and processing of e-waste or electrical or electronic equipment listed in Schedule-I of the rules including their components, consumables, parts and spares which make the product operational but shall not apply to
 - (a) Waste batteries as covered under the Battery Waste Management Rules 2022
 - (b) Packaging plastics as covered under the Plastic Waste Management Rules 2016
 - (c) Micro enterprises as defined in the Micro, Small and Medium Enterprises Development Act, 2006
 - (d) Radio-active wastes as covered under the provisions of the Atomic Energy Act, 1962 and rules made thereunder.
- Under these rules, specific roles and responsibilities are defined for manufactures, producers, bulk consumers, refurbishers and recyclers. Under Extended Producer Responsibility any producer of electrical or electronic equipment as given in Schedule-I for meeting recycling targets as per Schedule-III and Schedule -IV, only through registered recyclers of e waste to ensure environmentally sound management of such waste.
- E-waste is to be managed in an environmentally sound manner which means, taking steps to ensure that health and environment are protected from adverse effects of hazardous substance contained in such wastes.
- Rule 6 of the E-waste (Management) Rules 2022 interalia states that the producer of electrical and electronic equipment listed in Schedule -I shall be responsible for creating awareness through, media, publications, advertisements, posters or by any other means of communication.
- Rule 16 of the E- Waste (Management) Rules 2022 states reduction in the use of hazardous substances in the manufacture of electrical and electronic equipment and their components or consumables or parts or spares and every producer shall comply with the requirements under the rule.
- All consumers of electrical and electronic equipment irrespective of their status as bulk consumers or not, shall ensure that e-waste generated by them is channelized through registered recyclers or is returned to the pickup/take back services provided by the producers and recyclers. **Please refer to our website <https://www.godrej.com/godrej-security-solutions#GreenThink> under the 'Green Think' section of Godrej Security Solutions Division Page for more details on registered recyclers and collection centers/pick up points of the company.**
- All our products intended to be recycled under the category of e-waste (as defined above) carry a label or stamp of the WEEE symbol (A wheelie bin with a cross), which states that it falls under the hazardous waste category and is not to be disposed of along with normal garbage.



We seek your support in ensuring environmentally sound management of e-waste and aid us in sustaining our earth's natural resources and maintaining the earth's green cover intact for the benefit of our future generations.

RECORD OF PURCHASE

Please fill your details below for future reference.

Date of purchase: _____

Product model: _____


Name & address of Distributor/Dealer: _____


Distributor phone number: _____

FOR SAFETY, PLEASE READ THIS MANUAL PRIOR TO USE.



Godrej & Boyce Mfg. Co. Ltd., Godrej Security Solutions
Regd. Office: Plant No. 17, Pirojshanagar,
Vikhroli, Mumbai - 400079

 **Toll Free:** 1800 209 9955 (**Sales & Service**)

 **Whatsapp Support:** +91 9321665511 (**Service**)

 **Visit:** www.godrejsecure.com

 **Email:** secure@godrej.com (**Sales**), secare@godrej.com (**Service**)

Follow us:  www.facebook.com/GodrejSecure

 www.twitter.com/godrejsecure

An ISO 9001:2015, ISO 14001:2015, ISO 45001:2018

Products Marketed and Serviced by Godrej and Boyce Mfg. Co. Ltd.